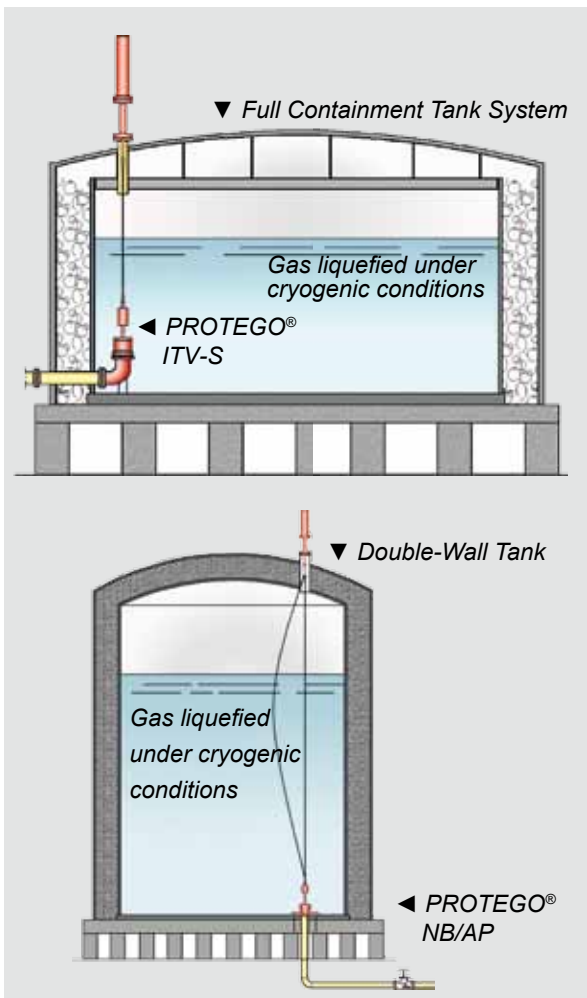
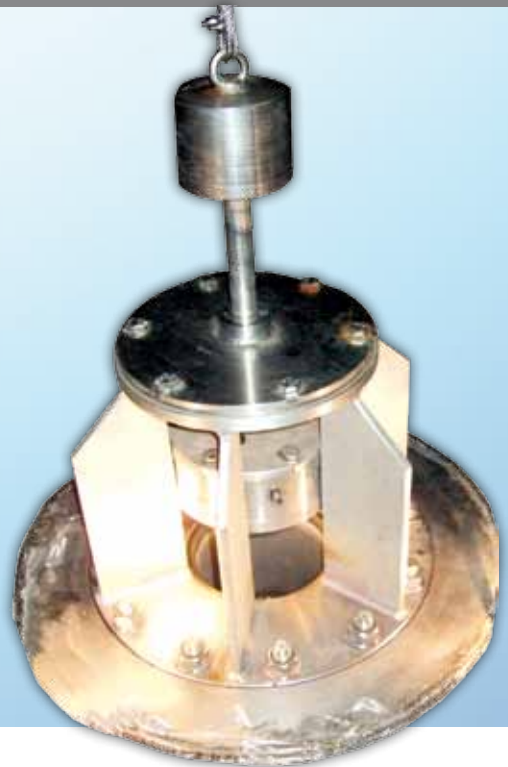


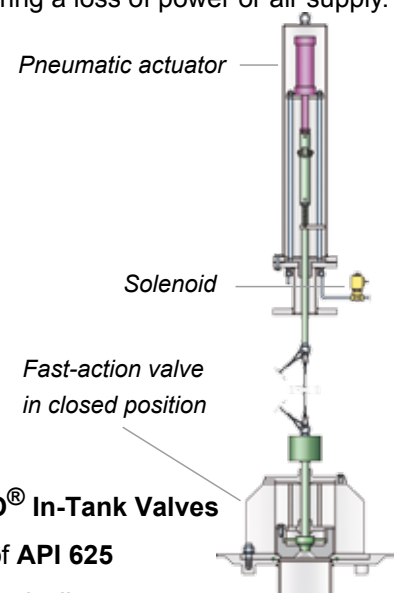
PROTEGO® In-Tank Valves NB/AP; ITV-S

The **PROTEGO®** In-Tank valves **NB/AP** and **ITV-S** for tank bottom or tank wall connection are used in cryogenic tanks and fulfills the requirements of **API 625**. The valves can be put to service in applications where temperatures as low as **-196°C** exist.



Function

The isolation valve is physically located inside the tank on the vessel bottom or on a connection to the tank shell and while the tank is in normal service, it is kept in open position. In the event of a failure of the external piping of the discharge line the In-Tank valve is automatically activated. It is also automatically activated during a loss of power or air supply.



Advantages of PROTEGO® In-Tank Valves

- Fulfill the requirements of **API 625**
- The valves closes automatically in an emergency case
- Complete discharge of the tank is prevented



for safety and environment

PROTEGO® In-Tank Valve SI/DP

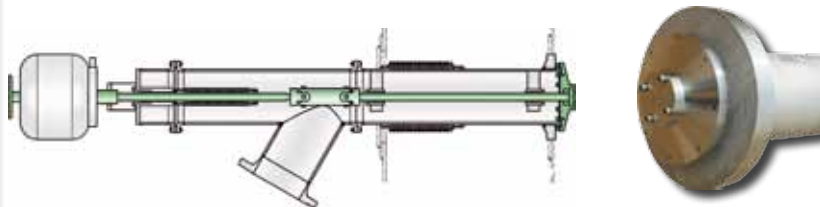
The **PROTEGO® In-Tank valve SI/DP** for tank wall connection is used in cryogenic tanks which serve to store liquefied gases. The valve can be put to service in applications where temperatures as low as -196°C exist.



Function and Advantages

The isolation valve disc is physically located inside of the tank. While the tank is in normal service, the valve is kept in open position and it is shut only in the event of a failure of the external piping of the discharge line.

The internal safety valve is opened and shut through a single-acting actuator. In the unlikely event - an incident - might occur, the control system is designed such that the valve will automatically seal tight. Also, provision is made such that an ancillary component can be fitted to permit manual actuation of the valve.



PROTEGO® Head Office

Braunschweiger Flammenfilter GmbH
Industriestrasse 11

D - 38110 Braunschweig

phone: + 49 (0) 5307-809-0

fax: + 49 (0) 5307-7824

email: office@protego.com

web: www.protego.com

